

A yellow backhoe loader is the central focus of the image, positioned at a construction site. The machine is viewed from a front-quarter perspective, showing its large front loader bucket and rear-mounted backhoe arm. The operator's cab is visible, featuring side mirrors and a roof-mounted light. The ground is uneven, with a circular area of green geotextile fabric laid out. In the background, there are mounds of earth and other construction equipment under a clear sky.

Brigade

Backhoe Loader

Recommended Safety Solutions

Which Backhoe Loader Products Do I Need?

1 7" AHD Monitor

BE-870HM : 6380
2 Camera inputs, AHD, 5-year warranty



2 AHD Side Camera

VBV-3100C - 25fps (PAL) : 7143
VBV-3101C - 30fps (NTSC) : 7144
Mirror View, 1080p, IP69K,
3-year warranty



3 AHD 360° Camera System

BN-360-300 : 5800
360° View, IP69K, HD, 5-year
Warranty



4 360° AI System with HFR*

VBV-360-1000-AI : 7524
IP69K, HD, 3-year warranty



5 AHD Camera

BE-8100C - 25fps (PAL) : 6408
BE-8100C - 30fps (NTSC) : 6410
IP69K-Rated, AHD, 1080p,
5-years warranty



6 Programmable Radar

BS-8100 : 7135
77GHz, IP69K, 3-year warranty



7 White Sound® Smart Reversing Alarm

SA-BBS-97 : 1399
Self-adjusting, Lifetime warranty



8 8 Channel Mobile Digital Recorder

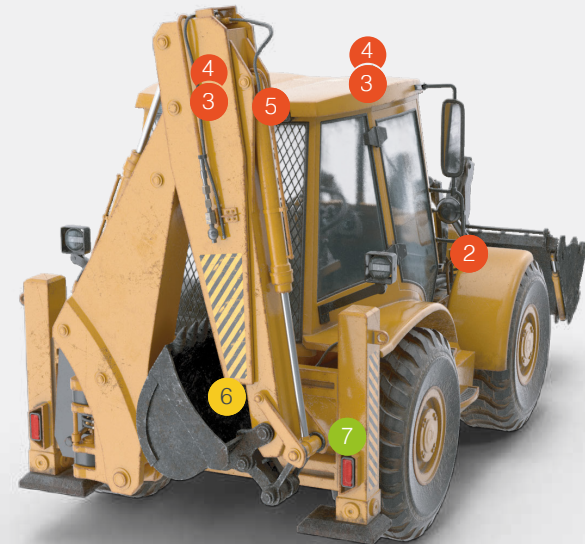
MDR-644
1TB or 2TB SSD, Wifi and/or 4G
3-Year warranty



Front



Rear



Brigade

Brigade Electronics International

Brigade House, The Mills, Station Road,
South Darenth, DA4 9BD. United Kingdom



+44 (0)1322 420300



international.sales@brigade-electronics.com



www.brigade-electronics.com

Brigade Electronics UK

Brigade House, The Mills, Station Road,
South Darenth, DA4 9BD. United Kingdom



+44 (0)1322 420300



sales@brigade-electronics.com



www.brigade-electronics.com

